

# **iPazzPort**

# **User Manual**

## **iPazzPortcast**

Website: [www.iPazzPort.com](http://www.iPazzPort.com)

Email: [support@iPazzPort.com](mailto:support@iPazzPort.com)

Facebook, Twitter: [iPazzPortfans](#)

Video tutorial on YouTube: [iPazzPortfans](#)

## 1. Introduction:

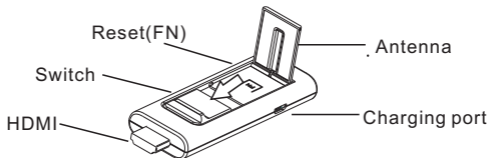
With iPazzPortcast, you can easily share your PPT, photos, video and websites from android smartphones and tablets, iPhones and iPads on your TV and projector.

**Protocol:** Miracast and Airplay.

**Video APP:** support Youtube, Amazon Video  
(Do not support other video app)

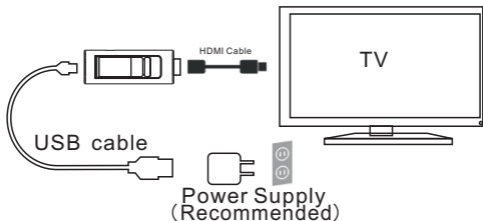
### Packing list:

iPazzPortcast	1
HDMI cable	1
USB power cable	1

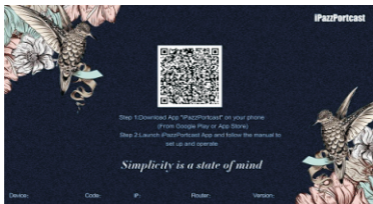


Note: Press "FN" for about 6 seconds to initialize system

## 2. Connect iPazzPortcast with TV or Projector



- Step 1: Plug one end of the USB power cable into your iPazzPortcast and the other end of the cable into the power supply and then into a nearby power outlet. (Power supply is not included in the box)
- Step 2: Plug one end of the HDMI cable into your iPazzPortcast and another end of HDMI cable into any open HDMI input on your TV or projector.
- Step 3: If you do not have access to an open outlet, you can also power your iPazzPortcast by plugging the USB power cable directly into an open USB port on your TV or Projector;
- Step 4: It will get below screen after connected successfully.



### 3 How to set up iPazzPortcast on Android device?

#### 3.1 Set up via iPazzPortcast APP:

Step 1: Connect iPazzPortcast with TV or Projector;

Step 2: Install App "iPazzPortcast" on your android device;  
(From Google play )

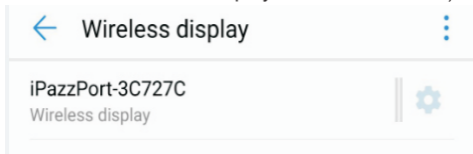
Step 3: Open the iPazzPortcast app by tapping the app icon on your Android device.

Step 4: Tap **Mirror** icon to find nearby iPazzPortcast devices;  
(Make sure turn on android devices WLAN at first)



Step 5: Find it and tap it to connect, done.

(Make sure turn on **Wireless display** function on android device at first; the device name is the same as the one displayed on the tv screen.)



### 3.2 Set up in another way(If not work via APP)

Step 1: Turn on **WLAN** on your android device;

Step 2: Find “**Miracast**” or “**wireless Display**” option and turn on it on your android device;

Step 3: Find **iPazzPort-xxxxxx** and tap it to connect, done.

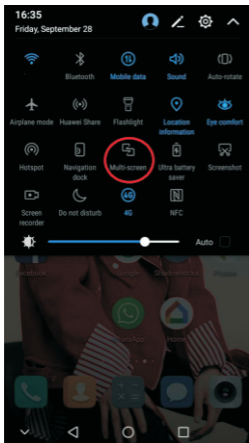
**Note:** Different interfaces of Miracast function on different phone (for reference only)

[HUAWEI] setting--wireless display

[xiaomi] setting--other ways--wireless display

[OPPO] setting- WLAN Display

[SAMSUNG] setting -more-Allsharecast or setting-Screen mirroring/screen share



For example:

1. Sliding down from the top of the screen;
2. Tap **Multi-screen** icon to find nearby **iPazzPortcast** and tap it to connect.

## 4. How to set up iPazzPortcast on IOS device?

### 4.1 Set up via iPazzPortcast APP

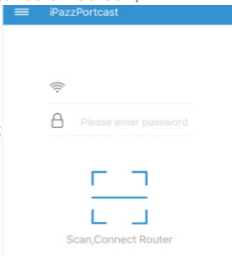
Step 1: Connect iPazzPortcast with TV or Projector;

Step 2: Install App "iPazzPortcast" on your IOS device;  
(From APP Store )

Step 3: Open the iPazzPortcast app by tapping the app icon on your IOS device, will get below screen;

Step 4: Tap **Scan, Connect Router** icon and scan the QR code on TV or Projector display screen;

Step 5: Get below screen and tap the **Blue Finger** icon;  
(If no WiFi, skip to step 8)



Wi-Fi icon    iPazzPort-A1C495

Lock icon    12345678



Click to get the WiFi list

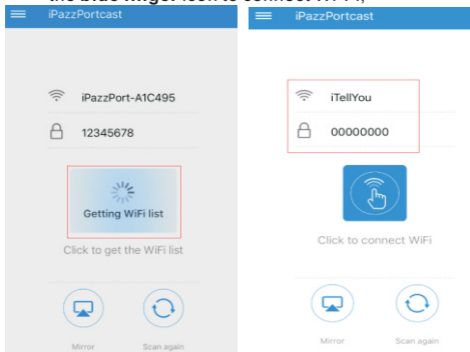


Mirror

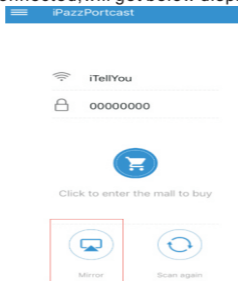


Scan again

Step 6: Get the Wi-Fi list and select one you want to connect to your iPazzPortcast, input the passcode and tap the **blue finger** icon to connect Wi-Fi;



Step 7: After connected, will get below display screen;



Step 8: Tap the **Mirror** icon, get below display screen, follow the instruction to complete the mirroring.

← Back

1. Slide out of Control Center from screen and select Screen Mirroring



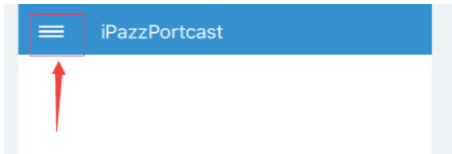
2. Select your TV in the device list

✈️ **Open the flight mode and avoid the information of the pop-up**



## More information about iPazzPortcast app?

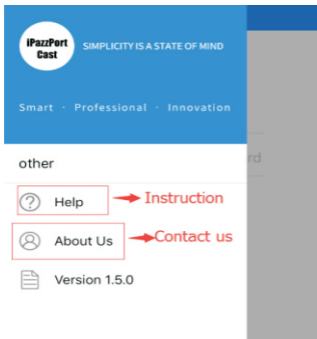
1. Open the APP and tap below icon at the top left corner;



2. Find below screen,

Help: the instruction to show you how to set up;

About Us: get our contact information.



3. This app will be upgraded to make it better, it will remind you to complete it.

## FAQ:

### **Q: Nothing shows on TV screen.**

- Forget to turn on TV. Turn on it.
- No power for iPazzportcast. Check the light on your iPazzportcast. It should be illuminated or blinking.
- USB port in TV does not provide enough current for iPazzPortcast. the LED color will be in red. Try the included power adapter
- TV source isn't set to the HDMI port. Check the source options in TV.
- Try to plug iPazzPortcast to the TV directly instead of a HDMI splitter.

### **Q: Picture and sound are not synchronized when play video?**

A: Please put the dongle at the front of TV with included HDMI cable to keep it closer with mobile phone and connect again; Keep the WiFi router more closer with iPazzPort\_Cast dongle to get stronger signal.

### **Q: Does it support Miracast or Airplay when the WLAN of mobile phone is off?**

A: No, should turn on the WLAN to receive the signal from iPazzPortcast, even though have not connected any WiFi, it works as normal.

### **Q: Does it support Netflix/ Hulu/ Youtube TV App?**

A: No. Due to the protocol protection, the content can't be displayed.

### **Q Fail to display online content?**

A: Please make sure the iPazzportcast and your mobile are connected with the same WiFi network.

### **Other questions or issues, please contact:**

**Email: [support@iPazzPort.com](mailto:support@iPazzPort.com)**