




# iPazzPort cast

Model:NC-812-16HV

## User Manual

Protocol Identification:

1. DLNA (  /  )
2. AirPlay (  )
3. Miracast

Music and video downloaded from iTunes is not available for this device

Thank you for purchasing the iPazzPort iPazzCast Media Streaming Player with brand new technology used for different devices.

Please e-mail us for supports to make best of the iPazzCast at [support@ipazzport.com](mailto:support@ipazzport.com). and All inquires will be answered within two business days.

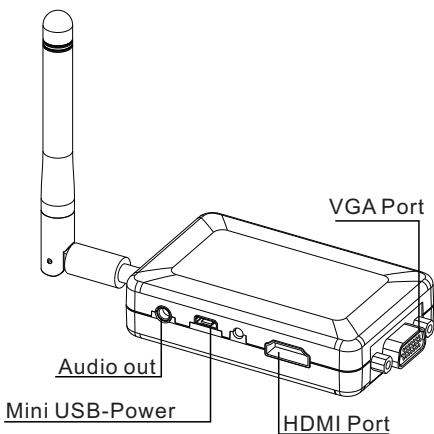
# 1.Introduction

\*Unisen iPazzPort Cast is a mini device to turn your Home HDMI Screen become a multi-function Media Sharing monitor from your Smart phone or tablet etc.

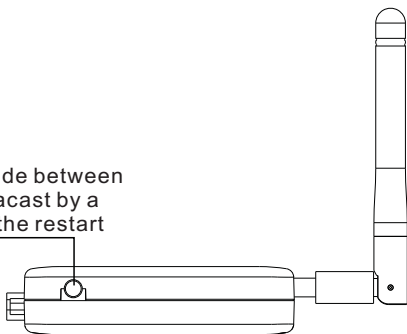
\*The iPazzPort Cast is so elegant and portable enough to come with you on trip or anywhere

\*You can use it to share your favorite Video or lovely photos with your family and friends just by plugging in iPazzPort Cast to HD socket of the HDMI Screen at home, in hotel or business meeting presentation by means of a local WiFi connection.

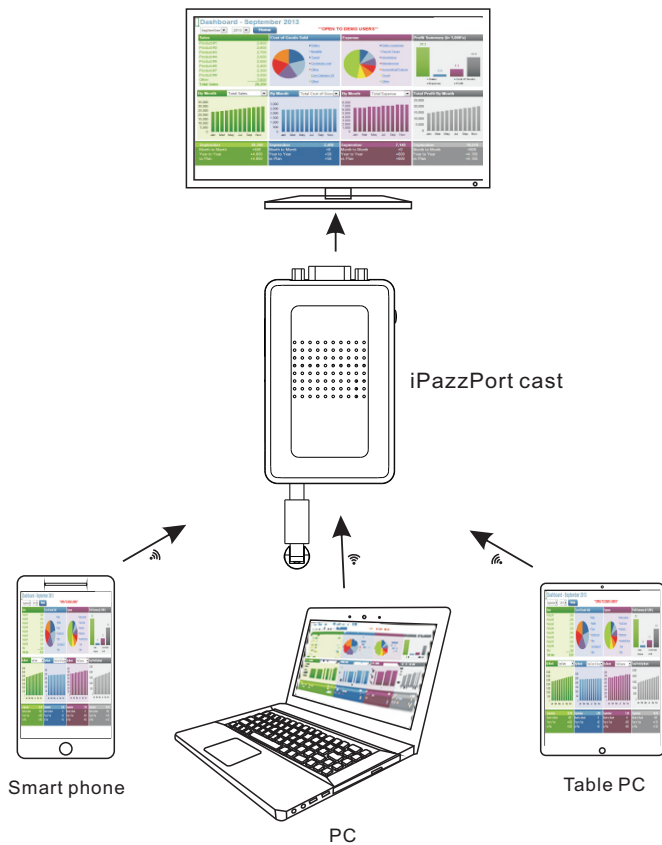
\*iPazzPort Cast is pretty compatible with Android and iOS, Wi-Fi display technology and ,based on DLNA, Airplay and Miracast Protocol , it is to mirror or cast streaming video, pictures from your Smart phone or tablet onto the HDMI Screen.



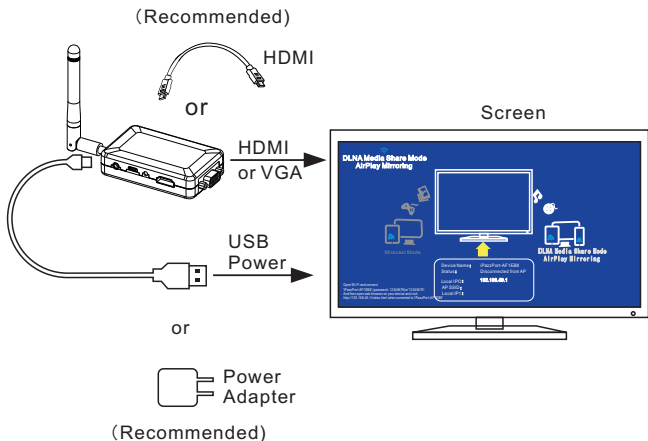
Free switch mode between  
DLNA and Miracast by a  
Long press on the restart



## 2.iPazzPort cast



### 3.Start up



1. plug the USB power in the computer port or plug the USB into the power adapter and connect it with AC power source within 110V -210V
2. plug the other end into the micro port on the device (.A blue indicator next to the mini USB socket will be steady on.
3. Then connect the HDMI / VGA socket from TV/projector with the iPazzPort Cast
4. Power on TV screen or Projector, look for the "source", that you plugged with, if you plug in VGA port, the TV screen should be set up with VGA mode, if you connected it to HDMI port, the function from TV screen or Projector should be under HDMI mode. please note, VGA port is for Mirroring video only
- 5 please connect the audio cable with this device and your speaker.
6. If the above set up and cable-connections are right in places, either your TV screen or Projector screen will show the icon "iPazzPort Cast", if not, please repeat the above steps 1 to 5 .

## 4.Connection

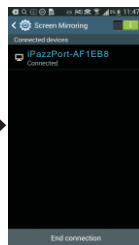
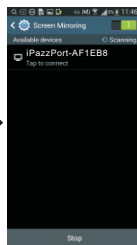
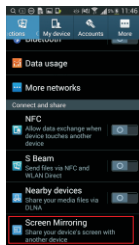
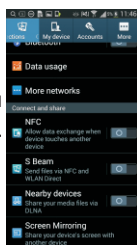
Please connect your cell phone or computer with this miracast fro meeting or training demonstration according to the following steps.



## 1.Android phone

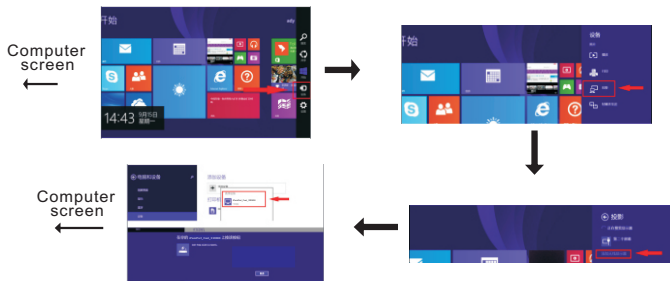
Turn on your phone,tap "settings" -->> Touch"Screen Mirroring" -->> Open"Screen Mirroring" -->> connect"iPazzPort-XXXXXX" -->> connect it successful

Android  
screen



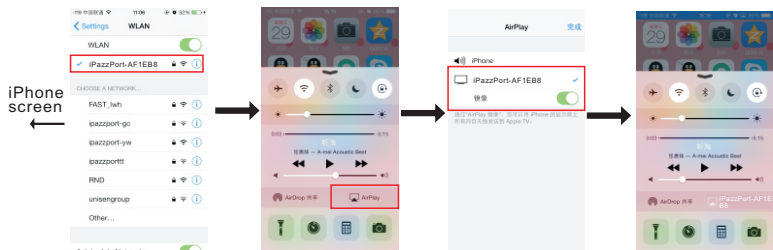
## 2.Win8.1 system

Turn on your computer, Choose "device" --> Choose "projection" --> Click "Add wireless monitor" --> click the icon "iPazzPort-XXXXXX" --> connected successful



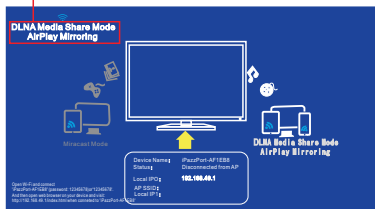
## 3.iPhone

Go to settings, WiFi connected "iPazzPort-XXXXXX" --> Turn on your iPhone, Open the taskbar --> Click AirPlay icon --> Choose "iPazzPort-XXXXXX", turn on "Mirroring", click "Done" --> connected successful



## 5.Connect WiFi

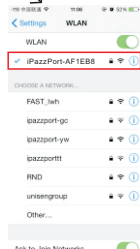
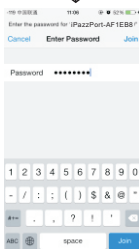
DLNA Mode



The iPazzPort cast screen



iPhone screen

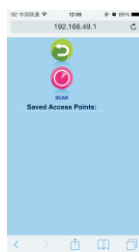


5.1.Go to settings,displays iPazzPort-XXXXXX

5.2.Enter password "12345678"Press "connect/Join"

5.3.Connected Successfully

iPhone screen



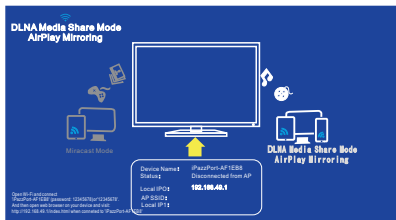
5.4.Open the mobile browser input "192.168.49.1 "

5.5.Click "Wi-Fi"

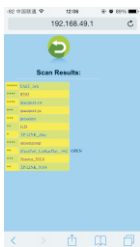
5.6.Click "Wi-Fi"



The iPazzPort cast screen

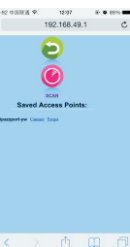


iPhone screen



5.7. Choose the WiFi router

5.8. Input password --- Click connect

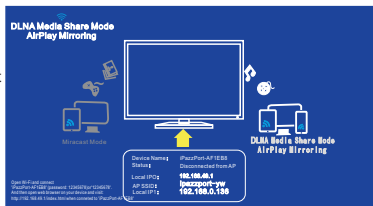


5.9. Connected Successfully



iPhone screen

The iPazzPort cast screen

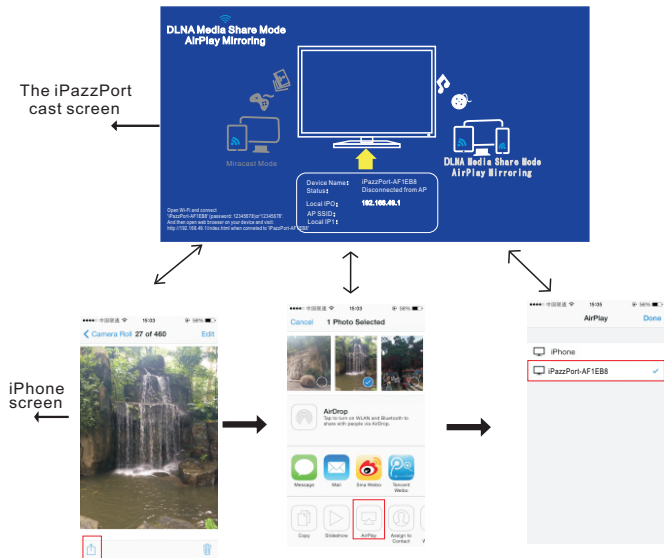


5.10. Go to settings, connect iPazzPort-XXXXXX

## 6.Using AirPaly share pictures, music and video(iPhone)

(Most people probably never realize that their device or apps have support for DLNA. On Android, apps that support DLNA has an option to scan for nearby devices. For example, the default video player app on Samsung Galaxy phone supports DLNA and allows us to use it by just tapping on an icon on the screen. we can then control the video playback on the TV using my phone. Alternatively, you can download the iMediaShare app from the Google Play store or Apps store. This app allows you to share photos, music and videos via DLNA.)

Such as “pictures”

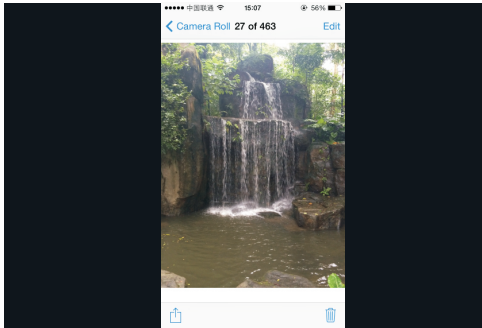


6.1.Enter Photos,  
click icon.

6.2.Choose AirPlay icon.

6.3.Choose “iPazzPort-XXXXXX”.  
(Due to protocol ,if you fail to find this  
icon, wait 10s or restart the app or refer  
to chapter 5 to reconnect WiFi or restart  
your devices.)

The iPazzPort  
cast screen



iPhone  
screen



6.4.success

## 7.Signal confirmation

This product is in wireless design , please place connect this unit with other devices correctly and place it at the best position and then follow the following steps to confirm the Wi-Fi signal strength.

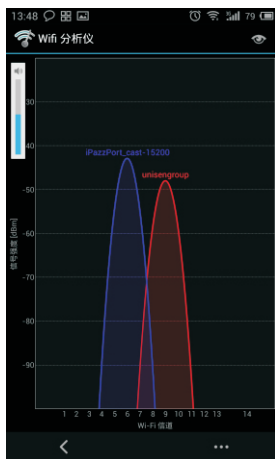
and get the best using for it.

### 7.1.Test the signal strength of Wi-Fi Router.

7.1.1 Download “WiFi Analyzer” in App Store on your phone or tablet.

7.1.2 Place your phone or tablet at the position, where you get the best signal strength

7.1.3 Run “WiFi Analyzer” to make sure the Wi-Fi Router signal strength is more than -60dB. Following the picture below ,please move the Wi-Fi router or iPazzPort Cast receive a better result if you get a weak signal.

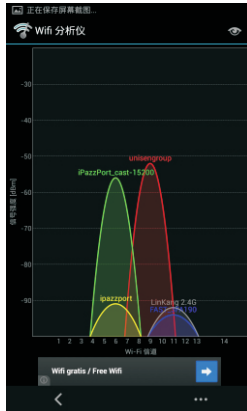


### 7.2.Test the receiving signal strength of iPazzPort Cast.

7.2.1 Download “WiFi Analyzer” in App Store to your phone or tablet.

7.2.2 Place the “iPazzPort Cast” at the correct position. Power it on, switch to DLNA method.

- 7.3 Take the phone or tablet away 4m from iPazzPort Cast.
- 7.4 Run "WiFi Analyzer" to confirm the receiving signal strength is -60dB or above, as the picture below shows .
- 7.5 If the signal is low, please move "iPazzPort Cast" or connect to HD extended cable. Please make sure there is no other unwanted signal interference.



eg. HD screen is made by metal components. If the Wi-Fi router or mobile is at the front of the HD screen, while "iPazzPort Cast" plug at the back of the HD screen. At the moment, HD screen sits between "iPazzPort Cast" and "Wireless Router (or cell phone)", which will affect the "iPazzPort Cast" in receiving signal from wireless router or cell phone.